

Please remember to sign the Visitor's Register – Thank you.

**Facilities Meeting
Tuesday, April 18, 2017**

7:00 PM – ROOM 200 - TEAO

AGENDA

- I. Public Comment**
- II. Approval of Minutes – March 21, 2017**
- III. Construction Report**
- IV. Discussion and Update Items**
 - a. Replacements & Upgrades at TEMS Bid Results**
 - b. Site Paving Repairs and Replacements at DES & VFMS Bid Results**
 - c. Traffic Study – Greg Richardson, Traffic, Planning and Design**
 - d. Parking Study – Dan Jalboot and Mort Isaacson, DJA**
 - e. Capital Sources and Uses**
 - f. Other**
 - g. Recap of Action Items**
- V. Future Facilities Committee Meetings to be held 7:00 p.m. at the TEAO in Room 200**
 - a. Wednesday, May 17, 2017**
 - b. Wednesday, June 7, 2017**
- VI. Adjournment**

2017 Committee Goals

1. Monitor student enrollment, township reports, District programs and existing school facilities.
2. Review and update the District Infrastructure Report.
3. Use Goals #1 and #2 to ensure District facilities meet the needs of students, staff and Administration.
4. Develop, review, and prioritize the facilities projects for summer 2017.
5. Monitor, review and determine impact of District-wide parking and traffic study for CHS, TEMS, VFMS and VFES.
6. Monitor, review and determine impact of District-wide Security Engineering Study.
7. Monitor, review and determine impact of Air Conditioning Study at Elementary and Middle Schools.
8. Work in conjunction with the Finance Committee to maintain funding of the capital improvement plan.

Facilities Committee Meeting Minutes
March 21, 2017
Room 200 – Tredyffrin/Easttown Administration Office
7:00 p.m.

Attending all or part of the meeting:

Board Committee Members: Michele Burger, Chair, Todd Kantorczyk, Edward Sweeney

Other Board Members: Douglas Carlson, Dr. Roberta Hotinski, Rev. Scott Dorsey, Virginia Lastner

T/E School District Representatives: Dr. Richard Gusick, David Francella, Colm Kelly, Stephanie Demming

Other: Dan Jalboot and Mort Isaacson from Daley + Jalboot

Community Members: Doug Anestad, Jerry Henige, Tina Whitlow, Ray Clarke, Ann McCarthy

Public Comment:

- Ray Clarke commented on the CCTV Security System Project.
- Doug Anestad commented on General Fund transfer to the Capital Projects Fund.

Approval of the Minutes:

- The Committee approved the minutes from the February 21, 2017 meeting.

BES PTO – Play Area Turf:

- Ann McCarthy from the BES PTO updated the Committee on a gift the PTO would like to donate to BES. It is turf grass, to be placed on a 1,980 square foot section of ground next to the school. The project is scheduled to be completed during the April Spring Break, with a cost of approximately \$23,000. The Committee approved the project and thanked Mrs. McCarthy for the donation of the gift.

Project # 1484: Replacements and Upgrades at BES, VFES & VFMS Bid Results:

- Mr. Jalboot and Mr. Isaacson reviewed the bid results for the Replacements and Upgrades at BES, VFES & VFMS which came in about \$31,901 under the construction estimate, for a bid total of \$906,099. The Facilities Committee approved the Replacements and Upgrades at BES, VFES & VFMS bids as presented and directed it be placed on the consent agenda at the next Board meeting.

Project # 1487: Renovations, Replacements & Upgrades at NEES Bid Results:

- Mr. Jalboot and Mr. Isaacson reviewed the bid results for the Renovations, Replacements &

Upgrades at NEES which came in about \$266,054 under the construction estimate, for a bid total of \$608,756. The Facilities Committee approved the Renovations, Replacements & Upgrades at NEES bids as presented and directed it be placed on the consent agenda at the next Board meeting.

Project #1490: Renovations, Replacements & Upgrades at CHS & HES Bid Results:

- Mr. Jalboot and Mr. Isaacson reviewed the bid results for the Renovations, Replacements & Upgrades at CHS & HES which came in about \$372,180 under the construction estimate, for a bid total of \$502,630. The Facilities Committee approved the Renovations, Replacements & Upgrades at CHS & HES bids as presented and directed it be placed on the consent agenda at the next Board meeting.

Project #1492: Turf Replacement at Teamer Field Bid Results:

- Mr. Jalboot and Mr. Isaacson reviewed the bid results for the Turf Replacement at Teamer Field which came in about \$195,550 under the construction estimate, for a bid total of \$444,450. The Facilities Committee approved the Turf Replacement at Teamer Field bids as presented and directed it be placed on the consent agenda at the next Board meeting.
- Mr. Kelly informed the Committee that the District will be receiving a free scoreboard to be placed at Teamer Field. The scoreboard purchased in August 2015 from AJM Electric is having issues, so they agreed to provide us with an additional scoreboard at no cost.

Public Comment:

- Ray Clarke commented on the project bids reviewed.

Future Meeting Dates:

- Tuesday, April 18, 2017 at 7:00 PM at the TEAO

Adjournment:

- The meeting adjourned at approximately 8:24 p.m.

Facilities Committee Meeting
Construction Report
April 18, 2017

2017 Construction Projects:

1. Project #1485 – Locker Replacements at Valley Forge MS
 - Issued for Bid November 30, 2016
 - Bids Received December 21, 2016
 - Committee Review January 10, 2017
 - Board Approved January 23, 2017
 - Scheduled Construction Start: June 19, 2017
 - Scheduled Completion: July 14, 2017

2. Project #1488 – Doors & Door Hardware at New Eagle ES
 - Issued for Bid November 30, 2016
 - Bids Received December 21, 2016
 - Committee Review January 10, 2017
 - Board Approved January 23, 2017
 - Scheduled Construction Start: February 8, 2017
 - Scheduled Completion: June 19, 2017

3. Project #1492 – Turf Replacement at Teamer Field
 - Issued for Bid February 7, 2017
 - Bids Received March 7, 2017
 - Committee Review March 21, 2017
 - Board Approved March 27, 2017
 - Scheduled Construction Start: June 19, 2017
 - Scheduled Completion: August 18, 2017

4. Project #1490 – Renovations, Replacements & Upgrades at Conestoga HS & Hillside ES
 - Issued for Bid February 7, 2017
 - Bids Received March 7, 2017
 - Committee Review March 21, 2017
 - Board Approved March 27, 2017
 - Scheduled Construction Start: June 19, 2017
 - Scheduled Completion: August 18, 2017

5. Project #1484 – Replacements & Upgrades at Beaumont ES, Valley Forge ES & Valley Forge MS
 - Issued for Bid February 7, 2017
 - Bids Received March 7, 2017
 - Committee Review March 21, 2017
 - Board Approved March 27, 2017
 - Scheduled Construction Start: June 19, 2017
 - Scheduled Completion: August 18, 2017

6. Project #1487 – Renovations, Replacements & Upgrades at New Eagle ES
 - Issued for Bid February 7, 2017
 - Bids Received March 7, 2017
 - Committee Review March 21, 2017
 - Board Approved March 27, 2017
 - Scheduled Construction Start: June 19, 2017
 - Scheduled Completion: August 18, 2017

- 7. Project #1489 – Replacements & Upgrades at Tredyffrin/Easttown MS
 - Issued for Bid March 14, 2017
 - Bids Received April 11, 2017
 - Committee Review April 18, 2017
 - Board Approved April 24, 2017
 - Scheduled Construction Start: June 19, 2017
 - Scheduled Completion: August 18, 2017

- 8. Project #1486 – Site Paving Repairs and Replacements at Devon ES & Valley Forge MS
 - Issued for Bid March 14, 2017
 - Bids Received April 11, 2017
 - Committee Review April 18, 2017
 - Board Approved April 24, 2017
 - Scheduled Construction Start: June 19, 2017
 - Scheduled Completion: August 18, 2017

- 9. Project #1491 – Replacements & Upgrades at Tredyffrin/Easttown Administration Office
 - Issued for Bid April 26, 2017
 - Bids Due May 24, 2017
 - Committee Review June 7, 2017
 - Board Approved June 12, 2017
 - Scheduled Construction Start: September 1, 2017
 - Scheduled Completion: October 31, 2017



DALEY+JALBOOT
Architects Inc

April 12, 2017

Mr. Arthur McDonnell
Tredyffrin / Easttown School District
West Valley Business Center
940 West Valley Road Suite 1700
Wayne, PA 19087

Re: Bid Review
Renovations, Replacements & Upgrades at
Tredyffrin/Easttown Middle School
DJA #1489

D R A F T

Dear Art,

Attached is the bid sheet for the Renovations, Replacements & Upgrades at the Tredyffrin/Easttown Middle School. The scope of work includes; renovations to the kitchen and dishwasher room, as well as replacement and relocation of the sewage ejector.

The District received two GC bids, three plumbing bids, and three electrical bids.

Budget Estimate Total:	\$ 840,000.
Bid Total:	<u>\$ 557,160.</u>
Difference - Under:	\$ 282,840.

The low bid general contractor is L. J. Paoella, the low plumber is Myco Mechanical and the low electrical is AN Lynch Co. All companies have provided quality work at the School District multiple times.

The District is in the process of reviewing the contractor qualifications and bid documents, we expect this to be completed next week. Let me know if you have any questions.

Sincerely,

A handwritten signature in blue ink, appearing to read 'Mort Isaacson'.

Mort Isaacson
DALEY + JALBOOT ARCHITECTS

**Bid Results -
Renovations, Replacements & Upgrades at
Tredyffrin/Easttown Middle School
Tredyffrin/Easttown School District**

April 11, 2016

DJA #1489

General Contract	L.J. Paolella	Donald E. Reisinger
General Base Bid	\$ 207,235	\$ 215,000
Add Alt #1 - Door Replacements A-02, A-11, A-12	\$ 28,725	\$ 46,000
	\$ 235,960	\$ 261,000

Plumbing Contract	Myco Mechanical	Vision Mechanical	Rogers Mechanical
Plumbing Base Bid	\$ 210,000	\$ 213,700	\$ 366,500
Add Alt #1 - Door Replacements A-02, A-11, A-12	\$ 20,000	\$ 40,275	\$ 69,600
	\$ 230,000	\$ 253,975	\$ 436,100

Electrical Contract	A.N. Lynch Co.	G.A. Vietri, Inc.	MJF Electric
Electrical Base Bid	\$ 81,500	\$ 84,000	\$ 88,000
Add Alt #1 - Door Replacements A-02, A-11, A-12	\$ 9,700	\$ 8,500	\$ 10,000
	\$ 91,200	\$ 92,500	\$ 98,000

Low Bid Total **\$ 557,160**



April 12, 2017

Mr. Arthur McDonnell
Tredyffrin / Easttown School District
West Valley Business Center
940 West Valley Road Suite 1700
Wayne, PA 19087

Re: Bid Review
Asphalt Paving, Paving Repairs & Paving Replacements at
Devon Elementary School & Valley Forge Middle School
DJA #1486

D R A F T

Dear Art,

Attached is the bid sheet for the Asphalt Paving, Paving Repairs & Paving Replacements at Devon Elementary School & Valley Forge Middle School project. The scope of work includes paving at the parking lot at Devon, along with asphalt walkway modifications at Valley Forge.

The District received two bids. Both are below the estimate, separated by only \$820. The work at Devon will repair the original areas of front parking lot, that were not addressed during the lot expansion 2 summers ago. At Valley Forge Middle, the work addresses replacement and extension of paved walkways, that will allow access from Valley Forge Road, to the walks that extend through the soccer fields and to the neighborhoods beyond.

Budget Estimate Total:	\$ 174,000.
Bid Total:	\$ <u>167,930.</u>
Difference - under:	\$ 6,070.

The low bid contractor is John McPhillips & Sons. This is a company that has performed successful work as a paving and sitework subcontractor on several projects for the School District.

The District is in the process of reviewing the contractor qualifications and bid documents, we expect this to be completed next week. Let me know if you have any questions.

Sincerely,

Mort Isaacson
DALEY + JALBOOT ARCHITECTS

**Bid Results -
Asphalt Paving, Paving Repairs &
Paving Replacements at 2 Schools
Tredyffrin/Easttown School District**

April 11, 2016

DJA #1486

General Contract	John McPhillips & Sons	Charlestown Paving
General Base Bid	\$ 167,930	\$ 168,750

Infrastructure Projects 2016 - 2017
Tredyffrin Easttown School District

Daley + Jalboot Architects
 4-18-17

D R A F T

DJA#	Infrastructure Projects		DJA Construction Estimate	Bid	Difference
1485	TE - Locker Replacements, VFMS GC - W.B. Mason	\$ 83,800	\$ 65,000	\$ 83,800	\$ 18,800
1488	TE - Provide Doors & Door Hardware, NEES, VFMS, HES GC - Unified Door & Hardware Group	\$ 141,000	\$ 162,588	\$ 141,000	\$ (21,588)
1484	TE - Replacements & Upgrades, BES, VFES, VFMS MC - Myco Mechanical EC - MJF Electric	\$ 574,000 \$ 332,099	\$ 938,000	\$ 906,099	\$ (31,901)
1487	TE - Renovations, Replacements & Upgrades, NEES GC - L.J. Paoiella MC - Rogers Mechanical PC - Rogers Mechanical EC - MJF Electric	\$ 349,256 \$ 71,700 \$ 54,000 \$ 133,800	\$ 874,810	\$ 608,756	\$ (266,054)
1490	TE - Renovations, Replacements & Upgrades, CHS, HES GC - Donald E. Reisinger MC - Myco Mechanical PC - Omitted from project	\$ 410,030 \$ 92,600 \$ -	\$ 917,247	\$ 502,630	\$ (414,617)
1492	TE - Turf Replacement, Teamer Field - GC - Athletic Fields of America (AFOA)	\$ 444,450	\$ 640,000	\$ 444,450	\$ (195,550)
1486	TE - Site Paving & Paving Replacements, DES, VFMS GC - John McPhillips & Sons	\$ 167,930	\$ 174,000	\$ 167,930	\$ (6,070)
1489	TE - Renovations, Replacements & Upgrades, TEMS GC - L.J. Paoiella PC - Myco Mechanical EC - A.N. Lynch Co.	\$ 235,960 \$ 230,000 \$ 91,200	\$ 840,000	\$ 557,160	\$ (282,840)
Infrastructure Total - Bid to Date			\$ 4,611,645	\$ 3,411,825	\$ (1,199,820)
1491	TE - Renovations & Upgrades, TEAO		\$ 395,000	\$ -	\$ (395,000)



T/E School District

SCHOOL ACCESS AND INTERNAL CIRCULATION ASSESSMENT

April 18, 2017

Presented By: Greg Richardson, P.E.

LOCATIONS

Allentown | Camden | Doylestown | Harrisburg | Philadelphia | Pittsburgh | Pottstown | West Chester 11

- To Conduct an Access and Internal Circulation Assessment
- Determine Short-Term/Long-Term Enhancements to Facilitate Traffic Flow
- Obtain Community Input

Conestoga High School





Valley Forge Middle School



Valley Forge Elementary School



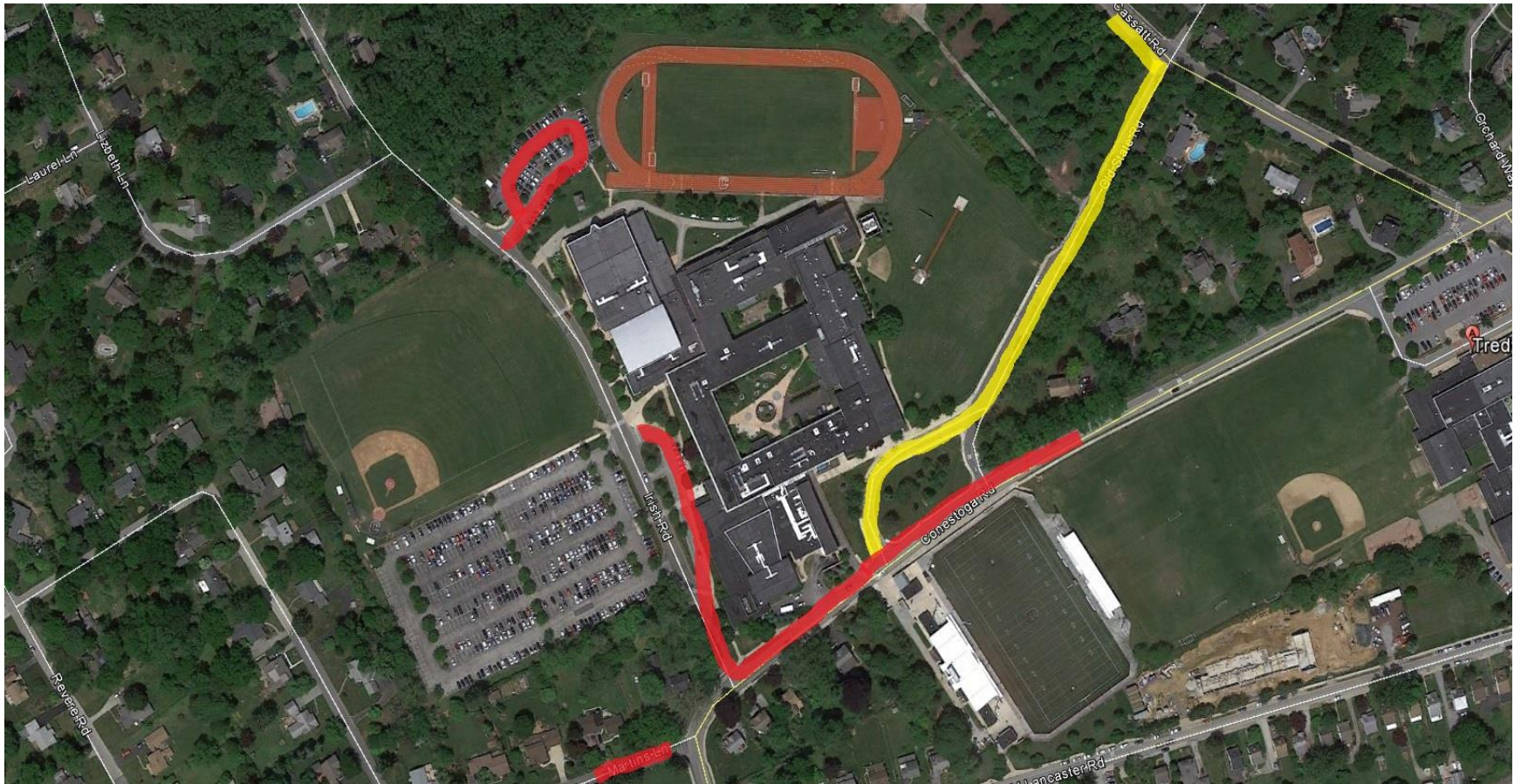
- **Conestoga High School**
 - Wednesday, February 22, 2017
 - ❖ 6:30 A.M. – 8:00 A.M.
 - ❖ 1:30 P.M. – 5:30 P.M.

- **T/E Middle School**
 - Tuesday, March 7, 2017
 - ❖ 6:30 A.M. – 8:00 A.M.
 - ❖ 1:30 P.M. – 5:30 P.M.

- **Valley Forge Middle School**
 - Thursday, January 12, 2017
 - ❖ 6:00 A.M. – 6:00 P.M.

- **Valley Forge Elementary School**
 - Tuesday, April 4, 2017
 - ❖ 7:30 A.M. – 9:30 A.M.
 - ❖ 2:30 P.M. – 4:30 P.M.

Conestoga High School – Vehicle Routes



Buses

Passenger Vehicles

T/E Middle School – Vehicle Routes

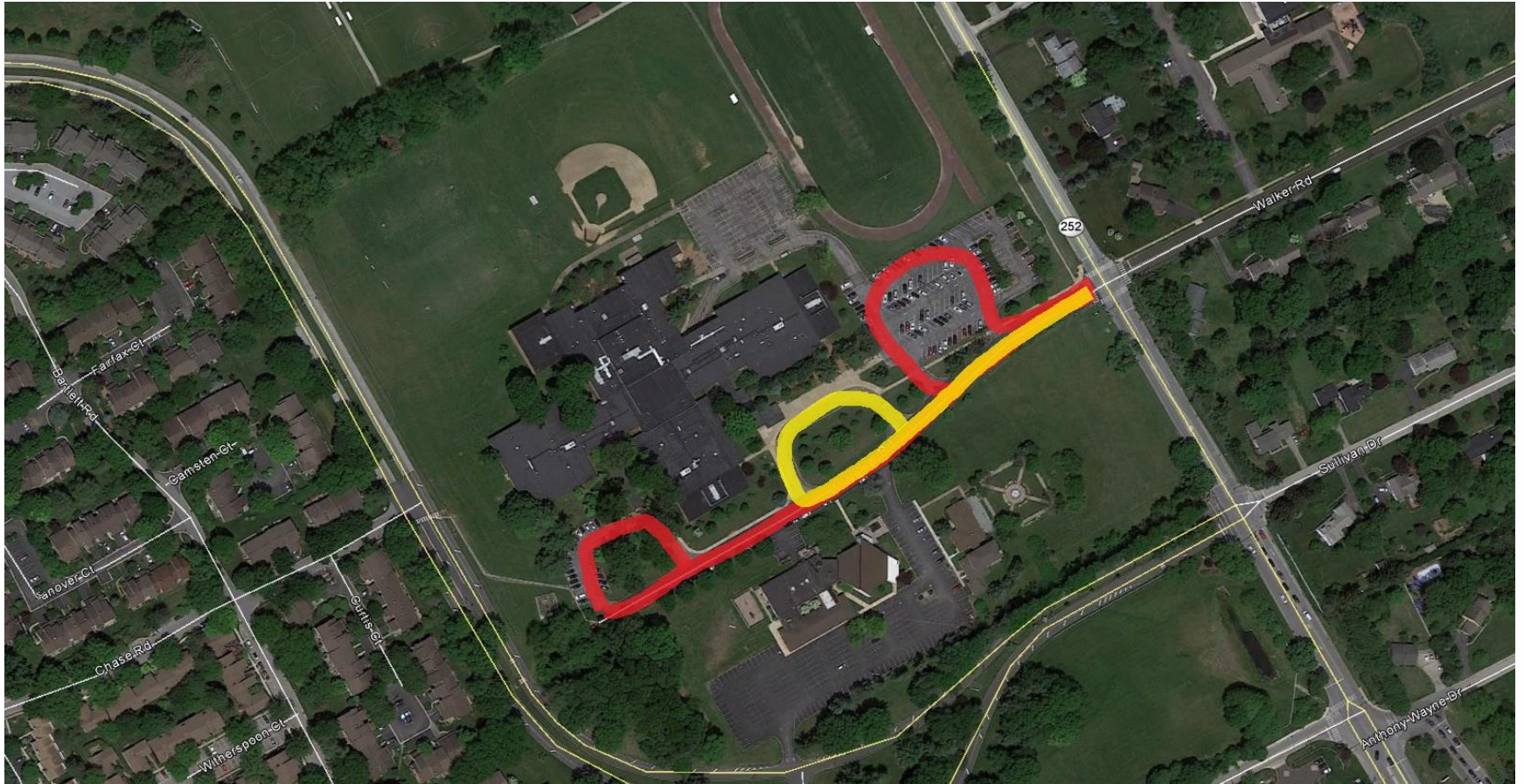


Buses



Passenger Vehicles

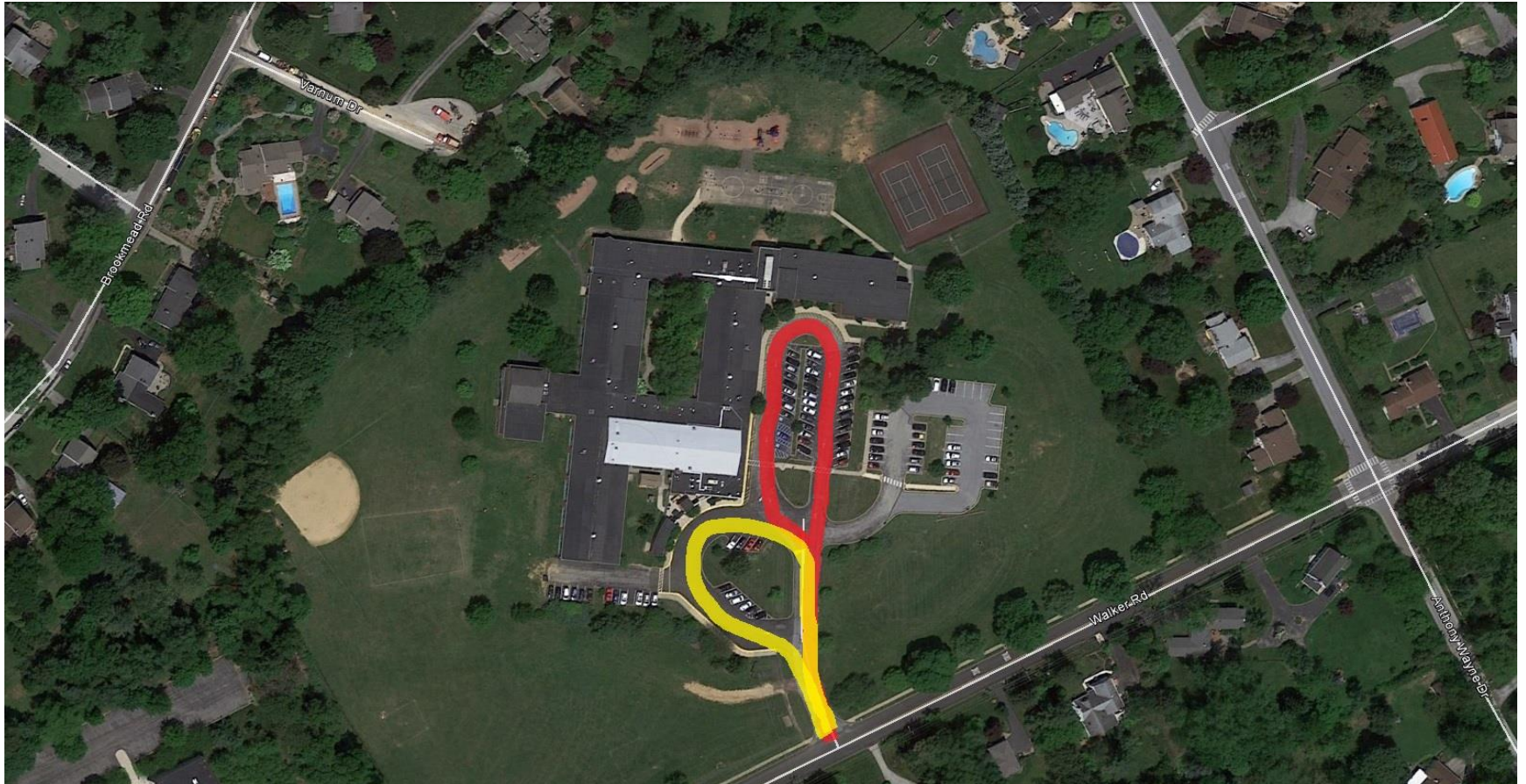
Valley Forge Middle School – Vehicle Routes



Buses

Passenger Vehicles

Valley Forge Elementary School – Vehicle Routes



Buses

Passenger Vehicles

- Adequacy of Parking Lots
- Driveway Access
- Arrival/Dismissal Times
- Bus Traffic
- Non-Bus Traffic
- Pedestrians
- Crossing Guards
- Traffic Control and Enforcement

T/E School District Online Survey

School	Responses
Conestoga High School	256
T/E Middle School	143
Valley Forge Middle School	169
Valley Forge Elementary School	127
Total:	695

Conestoga High School – WB Conestoga Rd. - AM



2017-02-23 7:20:08 AM

Conestoga High School – NB Irish Road - AM



2017-02-23 7:01:02 AM

Conestoga High School – SB Irish Road - AM



Conestoga High School – NB Irish Road - PM



Conestoga High School – SB Irish Road - PM



Conestoga High School – Bus Loop/Conestoga Rd. - PM



Conestoga High School – Bus Loop/Old State Rd. - PM



T/E Middle School – Bus Loop/Conestoga Road - AM



T/E Middle School – Parent Drop-Off/O. Lancaster Rd. - AM



T/E Middle School – Bus Loop/Conestoga Road - PM



T/E Middle School – Parent Pick-Up/O. Lancaster Rd. - PM



Valley Forge Middle School – AM



2017-01-12 7:35:42 AM

Valley Forge Middle School – Walker/Rt. 252 - AM



Valley Forge Middle School – PM



2017-01-12 2:40:42 PM

Valley Forge Elementary School – EB Walker Rd. - AM



Valley Forge Elementary School – WB Walker Rd. - AM



Valley Forge Elementary School – EB Walker Rd. - PM



Valley Forge Elementary School – WB Walker Rd. - PM



Valley Forge Elementary School – Bus Loop - PM



- Significant Vehicle Queues (internally and on public roadways)
- Illegal Turning Movements
- Improper Lane Usage
- Use of Improper Drop-Off and Pick-Up Areas
- Bus vs. Parent Vehicle Ratio
- Bus vs. Parent Vehicle Segregation

- Bus Schedule/Ride Time Evaluation
- Student Dismissal - Buses vs. Other Vehicles
- Additional Staff in the drop-off/pick-up areas
- Student Dismissal Times (e.g. Conestoga High School and T/E Middle School).
- Additional Crossing Guards
- Municipal Enforcement of Existing Parking Restrictions
- Potential Grant Funding Opportunities

➤ Conestoga High and T/E Middle Schools

- Bus Turnaround Area for sports team buses
- Additional Bus/Vehicle Queue Lane on Old State Road
- Vehicle Queue Area on Conestoga Road
- EB Conestoga Road Left Turn Lane at Cassatt Road
- Review/Modify Traffic Signal Operations
- T/E Middle School Additional Parking Lot and Queue Lane

➤ Valley Forge Middle School

- Secondary Driveway to Chesterbrook Boulevard
- EB Walker Road Right Turn Lane
- SB Valley Forge Road Right Turn Lane

➤ Valley Forge Elementary School

- Secondary Driveway
- WB Walker Road Right Turn Lane
- EB Walker Road Left Turn Lane
- Widen Existing Driveway

Visit Us on the Web



www.TrafficPD.com



LOCATIONS

Allentown | Camden | Doylestown | Harrisburg | Philadelphia | Pittsburgh | Pottstown | West Chester 47

PARKING STUDY UPDATE 2017
TREDYFFRIN/EASTTOWN SCHOOL DISTRICT

Beaumont Elementary School

Devon Elementary School

Hillside Elementary School

New Eagle Elementary School

Valley Forge Elementary School

Tredyffrin-Easttown Middle School

Valley Forge Middle School

Conestoga High School

DALEY + JALBOOT ARCHITECTS
APRIL 5, 2017



**Parking Study Update 2017
Table of Contents**

INTRODUCTION.....	5
ORDINANCES VS. EXISTING CONDITIONS.....	7
PARKING STUDY SUMMARY.....	9
PARKING ANALYSIS.....	10
Beaumont Elementary School	10
Devon Elementary School	12
Hillside Elementary School	14
New Eagle Elementary School	18
Valley Forge Elementary School	20
T/E Middle School	22
Valley Forge Middle School	26
Conestoga High School	28

Parking Study Update 2017

Introduction

Daley + Jalboot Architects (DJA) was retained by the T/E School District to update their 2008 Parking Study, for all Schools. A related report was simultaneously commissioned by T/E School District, to have Traffic Planning & Design (TPD) review traffic patterns and volume at all the Schools. It is the expressed intent of the District to have these related studies inform one another, and to yield information for District use moving forward.

This Study Update began with a questionnaire furnished to all School Principals, and included an on-site review of the current parking conditions. The Study also includes a review of Township Ordinances related to parking for both Tredyffrin and Easttown Townships. Finally, the Study includes an analysis of the collected data and provides design options to address the findings of the analysis, where applicable. A review of the 2008 parking study reveals that much progress was made by the District in addressing parking shortages.

Township Ordinance Review. This report examines the number of spaces that the respective Township Ordinances would require if the schools were built new. This was done as an exercise, and for a point of reference. Since the schools were built prior to the current Township parking requirements, changing the lots to comply with the ordinances is not necessary at this time.

Questionnaire and On-Site Review. A questionnaire was sent to the Principals asking for information about the number of employees and volunteers, as well as parking needs for special events. The results of those questionnaires are shown in the attached 'Parking Needs' charts for each school. At all school parking lots, for certain events that occur infrequently, it is impractical and not cost-effective to provide for full on site parking. Suggestions are provided for alternative measures to address these types of events. The goal of this study is to address the daily needs plus some smaller, regular events.

Analysis and Design Options. Included in this report are site plans showing the existing parking spaces at each school, as confirmed by the on-site review. Where there is a determined deficiency in the number of spaces, we have included possible solutions to increase parking. The two schools identified with such needs are Hillside ES and Tredyffrin/Easttown MS.

Summary. The 'Parking Study Summary' chart on page nine notes the parking space 'deficiency' in column "G". The deficiencies are based on existing spaces vs what the principals noted in their survey forms for typical daily use. At each school, we have included comments regarding available parking on the school lawns, adjacent non-school parking lots and on-street parking.

Parking Study Update 2017
Spaces Required by Ordinance Vs. Existing Conditions

Existing, off-street, striped parking spaces. Some existing spaces do not have the current Township-required width. These lots are currently 'grandfathered', since they met Township requirements when they were originally striped. The Ordinance requirements below are the requirements of the current codes. Most of the spaces and lots were constructed prior to the current Ordinances (see page 5 for requirements).

Small Group Rooms are included in the 'classroom' count for the elementary schools, but not the middle schools or high school. This was done because the small group rooms are typically staffed at the elementary schools. At the elementary schools in Easttown, the 'visitors and volunteers' were not included in the 'full or part time staff'.

Township Ordinance Requirements

Tredyffrin Township Off-Street Parking: Educational Uses

Elementary:

Two parking spaces per classroom, plus off street loading for at least five school busses.

Middle / Junior High:

Two spaces for each classroom plus one space for each three seats in the auditorium or gym, plus off-street loading for at least seven school busses.

High School:

Ten off-street spaces for each classroom, plus one space for each three seats in the auditorium or gym, plus off-street loading for at least seven school busses.

Easttown Township Off-Street Parking: Educational Uses

Elementary and Middle Schools:

One space for each employee, whether full or part time, plus one space for every twenty students.

High School:

One space per classroom, plus one space per ten students in grades 11 and 12, plus one space per ten fixed seats in the auditorium.

Tredyffrin Township Parking

Hillside ES:

Required	46
Existing	64 (2 HC) There are three parking spaces that do not comply with the required aisle width.

New Eagle ES:

Required	66
Existing	81 (2 HC)

Valley Forge ES

Required	76
Existing	100 (3 HC)

Valley Forge MS (53 CR's, 734 seats)

Required	352
Existing	225 (6 HC)

Tredyffrin / Easttown MS (51 CR's, 730 seats)

Required	345
Existing	118 (4 HC) Not including NOC, which has 33 plus 2 HC.

Conestoga HS (100 CR's, 840 seats)

Required	1,280
Existing	593 (12 HC)

Easttown Township Parking

Beaumont ES: (full & part time staff 75, enrollment 404)

Required	95
Existing	88 - parking available at Township Building per agreement 1994 (4 HC). One space in the south front corner is not easily useable

Devon ES: (full & part time staff 74, enrollment (1,101)

Required	100
Existing	104 (5 HC)

Parking Study Update 2017
Parking Study Summary

School	A Existing Spaces 2008	B Existing Spaces 2017	C	D Existing HC Spaces	E Existing HC Deficit	F Needed/Requested Spaces (w/ Required HC)	G Deficit Spaces	H Total Spaces (See Note 1)
Beaumont Elementary School	83	88	Note 2	4	0	80-90 (HC4)	0	88 (HC4)
Devon Elementary School	76	104		5	0	89 (HC5)	0	104 (HC5)
Hillside Elementary School	58	65	Note 3	2	1	110 (HC5)	46	97 (HC3)
New Eagle Elementary School	58	94	Note 4	3	1	93 (HC4)	0	94 (HC3)
Valley Forge Elementary School	73	100		3	1	90 (HC4)	0	100 (HC3)
Tredyffrin / Easttown Middle School	117	118	Note 5	4	1	144 (HC5)	26	156 (HC5)
Valley Forge Middle School	221	225		6	1	168 (HC7)	0	225 (HC6)
Conestoga High School	596	593	Note 6	12	0	578 (HC12)	0	593 (HC12)

Notes:

The 'Spaces Needed' (column F) are based on the surveys returned by the Principals and indicates the number of HC spaces that would be required.

Parking spaces counted are 'off -street', 'striped' parking spaces

Accessible parking spaces required are as per IBC 2009, Section 1106

Note 1: Column 'H' is the total of spaces at each school. At Hillside and T/EMS this column indicates the totals after the proposed new additional parking.

NEES, VFES and VFMS should restripe spaces to address the HC deficit listed in column 'E'.

Note 2: In 1994 when seeking the Planning Commission approval the Township offered to allow the school to use the Township spaces

across the street. That is when the sidewalk was installed from the District parking lot to Beaumont Road.

Note 3: There are three parking spaces that don't comply with the required adjacent aisle width, but are included in the 64 spaces (col. B). Some

of these spaces were eliminated in the count in column 'H'. Column "H" does include the 8 spaces noted on the plan that require a variance due to slope.

Note 4: Fourteen spaces striped in the existing playground along the hill

Note 5: This does not include any of the 33 standard and 2 HC parking spaces at the NOC

Note 6: The majority of spaces are 8'-6" wide and restriping to the current ordinance width of 9' would mean the loss of 42 spaces. This count does not include the on-street spaces (not striped) on Old State Road.



Parking Study Update 2017
Beaumont Elementary School - Parking Needs

Daily Needs	Full Time	Part Time	Total	Comments
Teachers & Aides	58	1	59	
Itinerant Teachers & Staff	3		3	
Administration	1		1	
Support Staff	2	2	4	
Visitors & Volunteers			5 to 15	
Service / Nurses				
Custodial Staff	4		4	
Cafeteria Staff	4		4	
Total			80-90	

Special Events

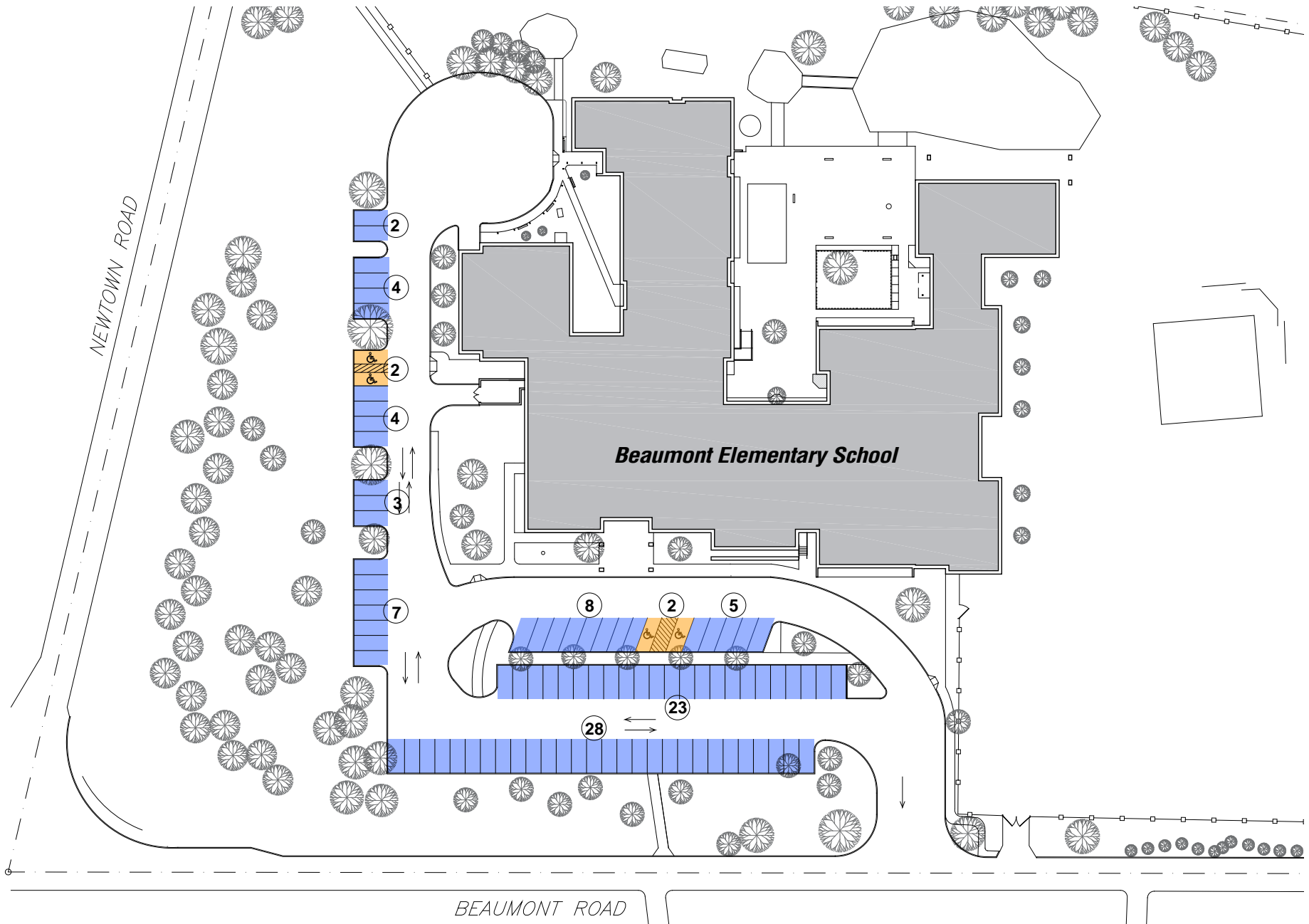
Pizza Bingo Nights			609	*
Book Fair			400-600	
Spring Fair			609	*
Cultural Arts Programs			15-20	
Opening Week Picnic			609	*
Curriculum Nights			609	*

* Principal used enrollment x 1.5

Note: Additional parking is available in the Township lots across Beaumont Road and possibly on the grass fields.



DALEY+JALBOOT
 Architects LLP



Parking Study Update 2017
Devon Elementary School - Parking Needs

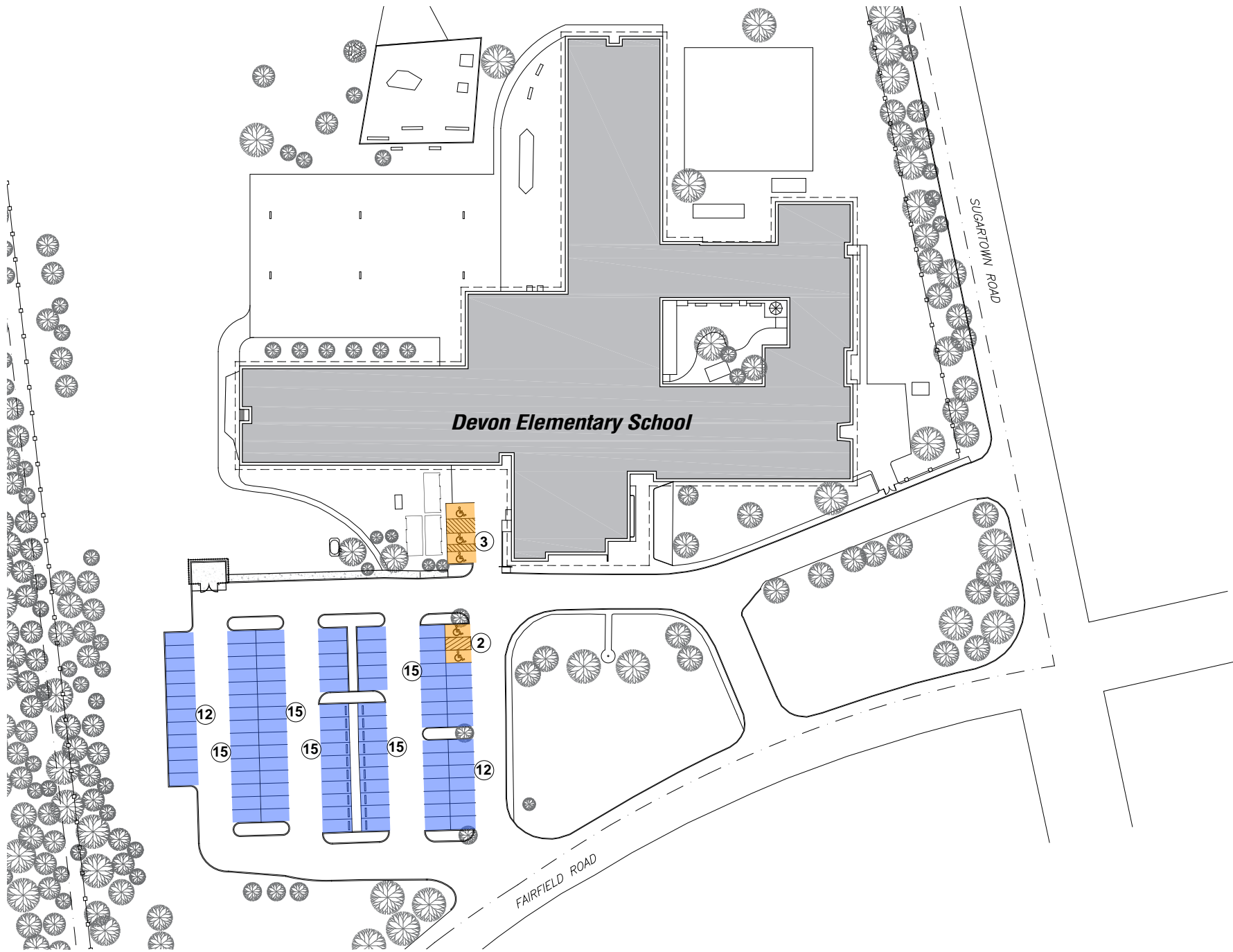
Daily Needs	Full Time	Part Time	Total	Comments
Teachers & Aides	54		54	
Itinerant Teachers & Staff	5		5	
Administration	1		1	
Support Staff	6		6	
Visitors & Volunteers			15	
Service / Nurses				
Custodial Staff	4		4	
Cafeteria Staff	4		4	
Total			89	

Special Events

Pizza Bingo Nights				Full lot & street
Halloween				Full lot & street
Spring Fair				Full lot & street
Cultural Diversity Night				Lot full
Welcome Back Social				Full lot & street
Curriculum Nights				Full lot & street
4th Grade PAL Presentations				Full lot & street



DALEY+JALBOOT
 Architects LLP



Parking Study Update 2017
Hillside Elementary School - Parking Needs

Unlike other elementary schools, Hillside does not have lawns to park cars on for large events.

The on street parking requires longer than usual walks to reach the school building. The paved play area at the rear of the school is not opened for overflow parking.

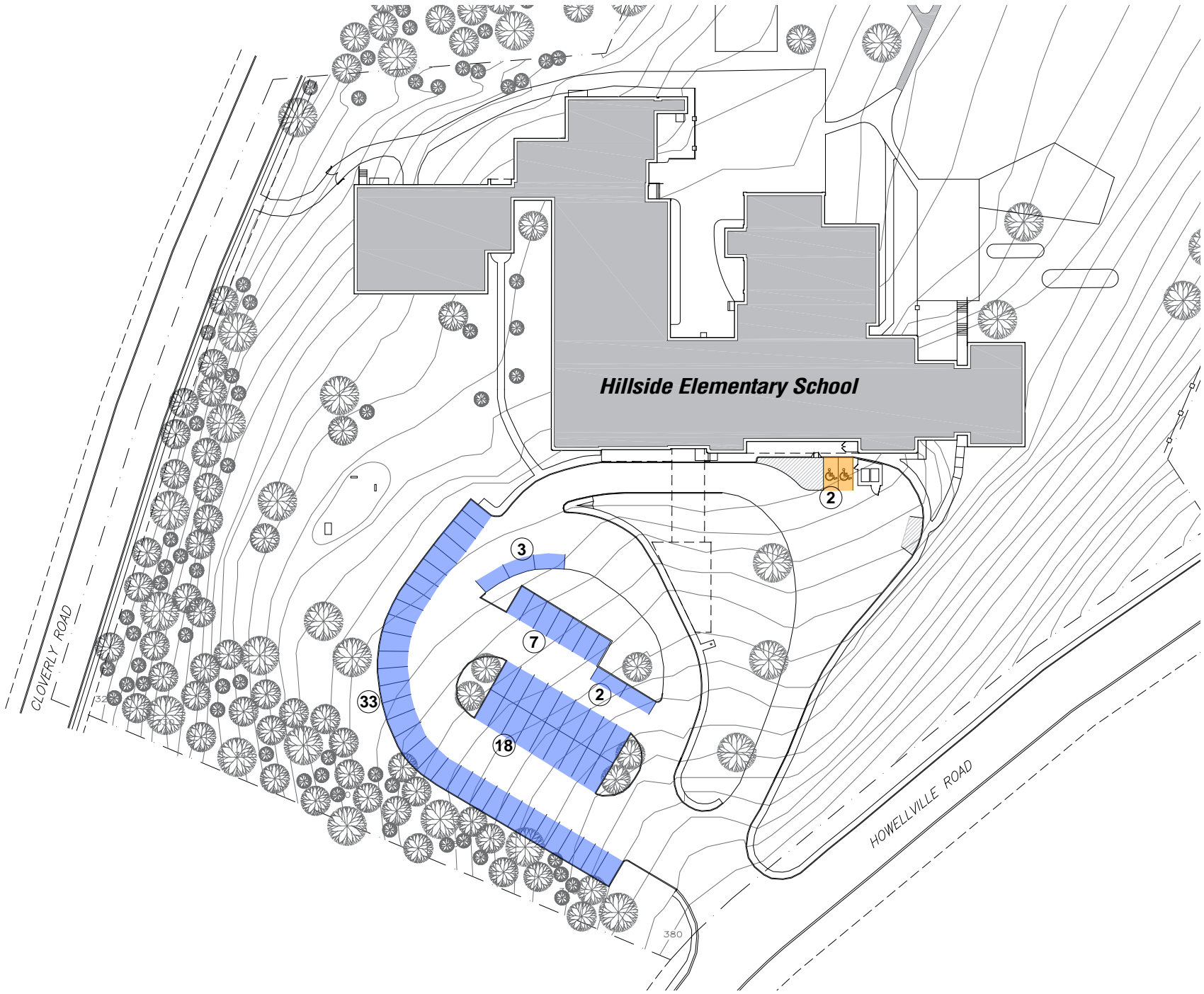
Daily Needs	Full Time	Part Time	Total	Comments
Teachers & Aides	67	7	74	
Itinerant Teachers & Staff	0		0	
Administration	1		1	
Support Staff	0		0	
Visitors & Volunteers	0		0	
Service / Nurses	0	26	26	
Custodial Staff	3	2	5	
Cafeteria Staff	4		4	
Total			110	

Special Events

Pizza Bingo Nights	100
Open House	250
Spring Fair	450
Cultural Arts Program	20
Water Ice Social (evening)	200
Curriculum Nights	98-184
Halloween Parade	215-237
Book Fair	100
Valentine Day Parties	25
Holiday Parties	25
Parent / Teacher Conf.	40
Field Trip Chaperones	20
Grade Level Special Projects	20



DALEY+JALBOOT
 Architects LLP



**Parking Study Update 2017
Hillside Elementary School - Proposed Additional Parking**

The proposed additional parking is similar to that proposed in the 2008 Parking Study. We are showing the elimination of five existing stripped spaces. Two are eliminated because the aisle width where they were added is no longer compliant with the Township Ordinance. The three other spaces are in the bus loop and may create a circulation problem for the busses.

The new parking lot is located over the existing stormwater basin. The new stormwater management will be in an underground system beneath the parking lot. There will be a need for structural fill to raise that part of the site to accommodate the new lot. The parking will generally run parallel to the topography. The entrance to the new parking lot has a slope of approximately 10%, even though it is the same slope as the adjacent existing parking it exceeds the 7.5% maximum noted in the Township Ordinance. It may be possible to get a variance from the Township for the additional eight spaces. See the site plan for the location of these eight spaces.

This proposal adds 32 parking spaces to the site, resulting in a total of 97 spaces. This would greatly improve the conditions but does not quite reach the desired capacity of 110 indicated on the Parking Summary (pg. 9).

Cost Estimate:

General Construction

Demolition & Earthwork	\$78,850
Site Development	\$142,390
Stormwater Management (25' x 80' x 5')	\$104,130
Electric Construction	\$35,600
Paving Replacement	\$95,700

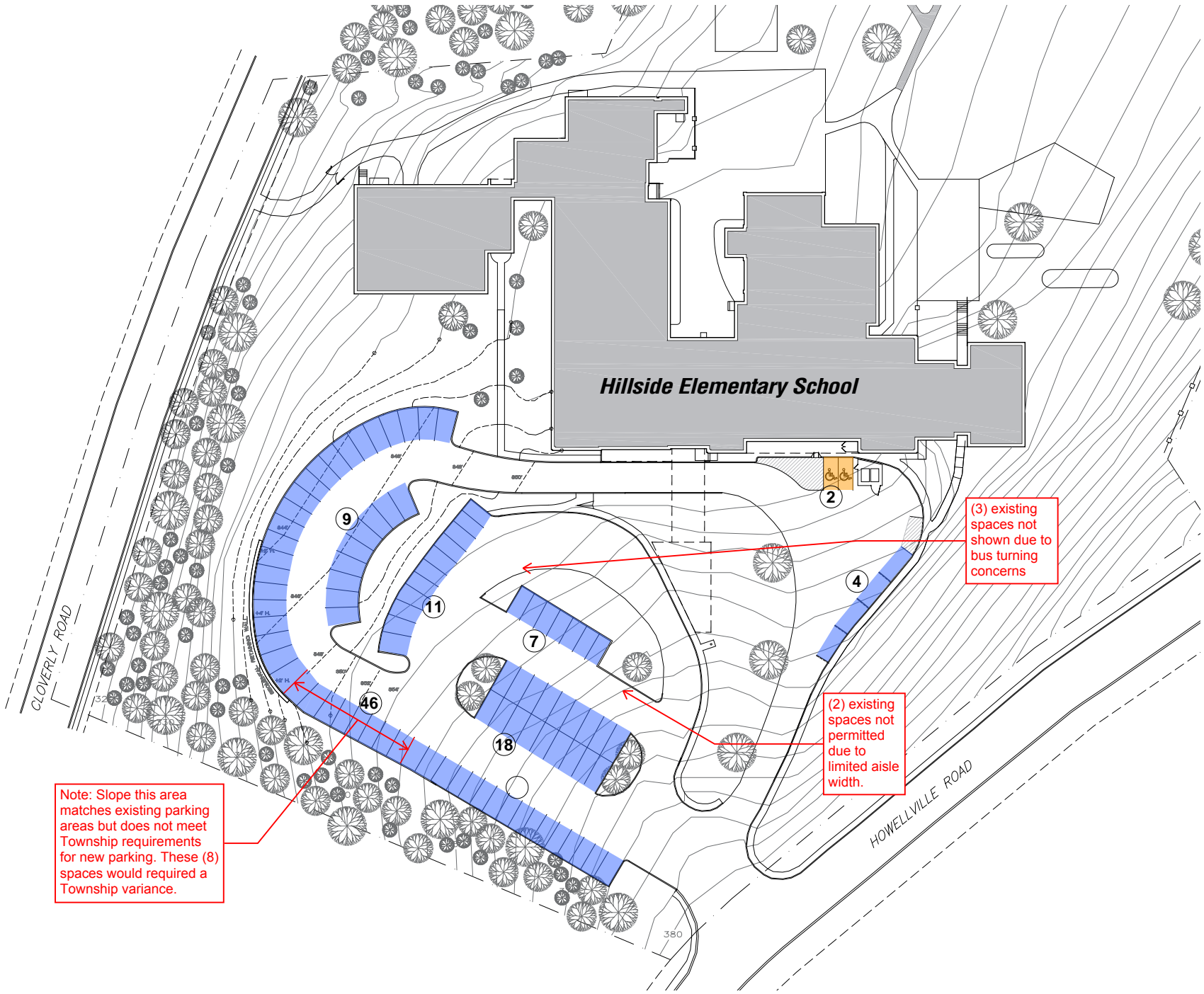
Subtotal	\$456,670
General Conditions / O.H. & P. (14%)	\$63,930
Bond / Insurance (2%)	\$10,400
Contingency (10%)	\$52,000

2008 Total	\$583,000
Factor for 2017 Dollars (20%)	\$116,600

2017 Total Construction Cost \$699,600



DALEY+JALBOOT
Architects LLP



Hillside Elementary School

CLOVERLY ROAD

HOWELLVILLE ROAD

Note: Slope this area matches existing parking areas but does not meet Township requirements for new parking. These (8) spaces would require a Township variance.

(3) existing spaces not shown due to bus turning concerns

(2) existing spaces not permitted due to limited aisle width.

Parking Study Update 2017
New Eagle Elementary School - Parking Needs

Daily Needs	Full Time	Part Time	Total	Comments
Teachers & Aides	62	3	65	
Itinerant Teachers & Staff	7	2	9	
Administration	1		1	
Support Staff / Nurses	2		2	
Visitors & Volunteers	2		2	
Service	2		2	
Custodial Staff	2	2	4	
Cafeteria Staff	4		4	
ACP	2	2	4	
Total			93	

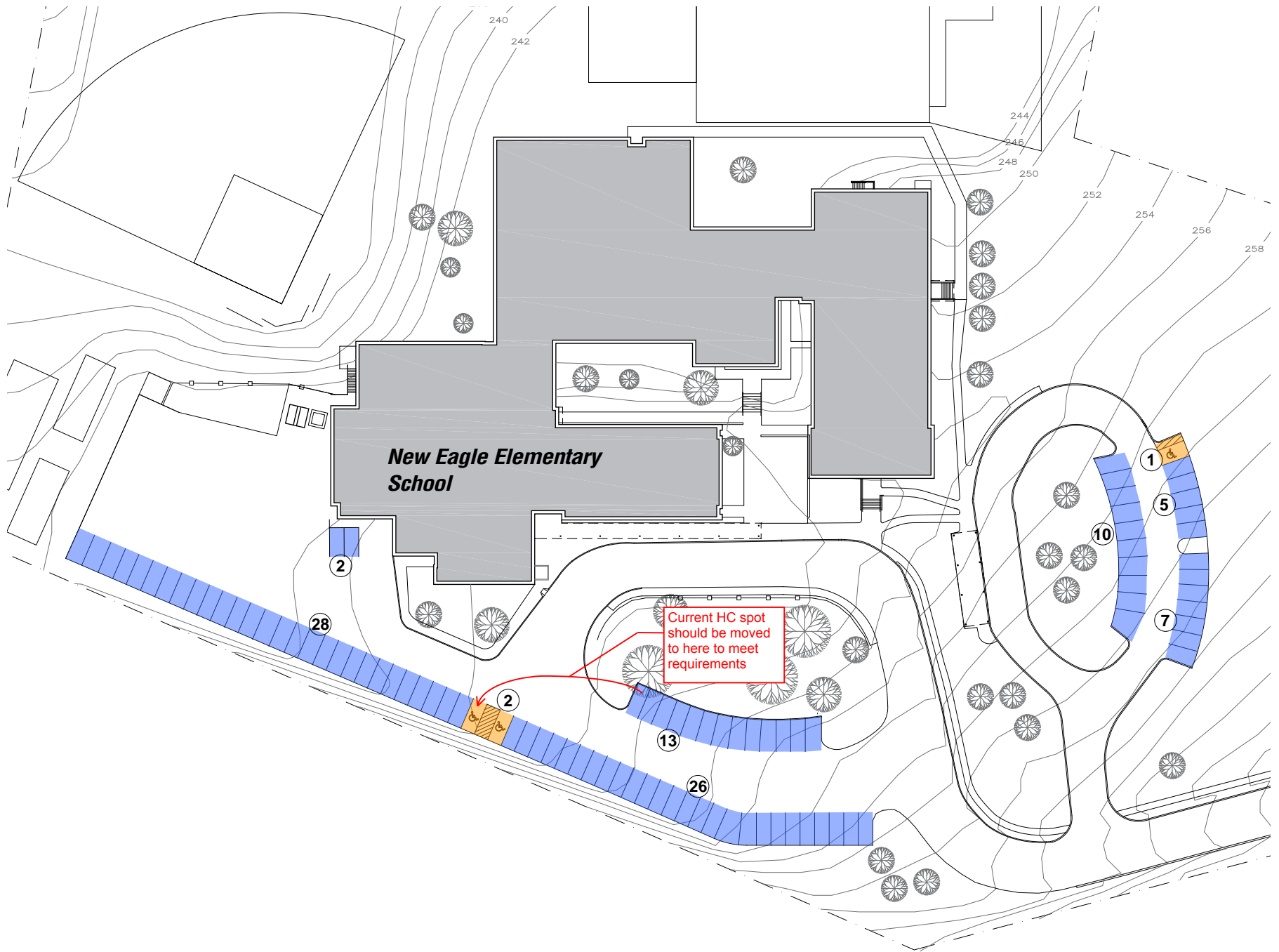
Special Events

Pizza Bingo Nights		250	Held at Conestoga HS
Opening Week Picnic		90	
Spring Fair		40	
Cultural Arts Program		3	
Curriculum Nights		96-200	
Book Fair		6	

Note: Large event parking takes place on the lawn adjacent to the entry drive.



DALEY+JALBOOT
 Architects LLP



Parking Study Update 2017
Valley Forge Elementary School - Parking Needs

Daily Needs	Full Time	Part Time	Total	Comments
Teachers & Aides	36	25	61	
Itinerant Teachers & Staff		10	10	
Administration	1		1	
Support Staff / Nurses	2		2	
Visitors & Volunteers		7	7	(a)
Service		1	1	
Custodial Staff	3	1	4	
Cafeteria Staff	4		4	
Total			90	

Special Events

Pizza Bingo Nights			675	Held at CHS (b)
Opening Week Picnic			675	(b)
Spring Fair			675	(b)
Cultural Arts Program			20-250	(c)
Curriculum Nights			336	(d)
Book Fair			50-75	(e)

Comments:

- (a) +/-25 / day and approx. 7 at any given time
- (b) Principal used enrollment x 1.25
- (c) Large attendences are evening events. Park on grass.



DALEY+JALBOOT
 Architects LLP



Valley Forge Elementary School

Parking Study Update 2017
Tredyffrin Easttown Middle School - Parking Needs

Daily Needs	Full Time	Part Time	Total	Comments
Teachers & Aides	98	0	98	
Itinerant Teachers & Staff		20	20	
Administration	3		3	
Support Staff / Sect.	3		3	
Visitors & Volunteers		6	6	
Service / Nurses	1	1	2	
Custodial Staff	7		7	
Cafeteria Staff	2	3	5	
Total			144	

Special Events

Many more than can be accommodated

Current Solutions

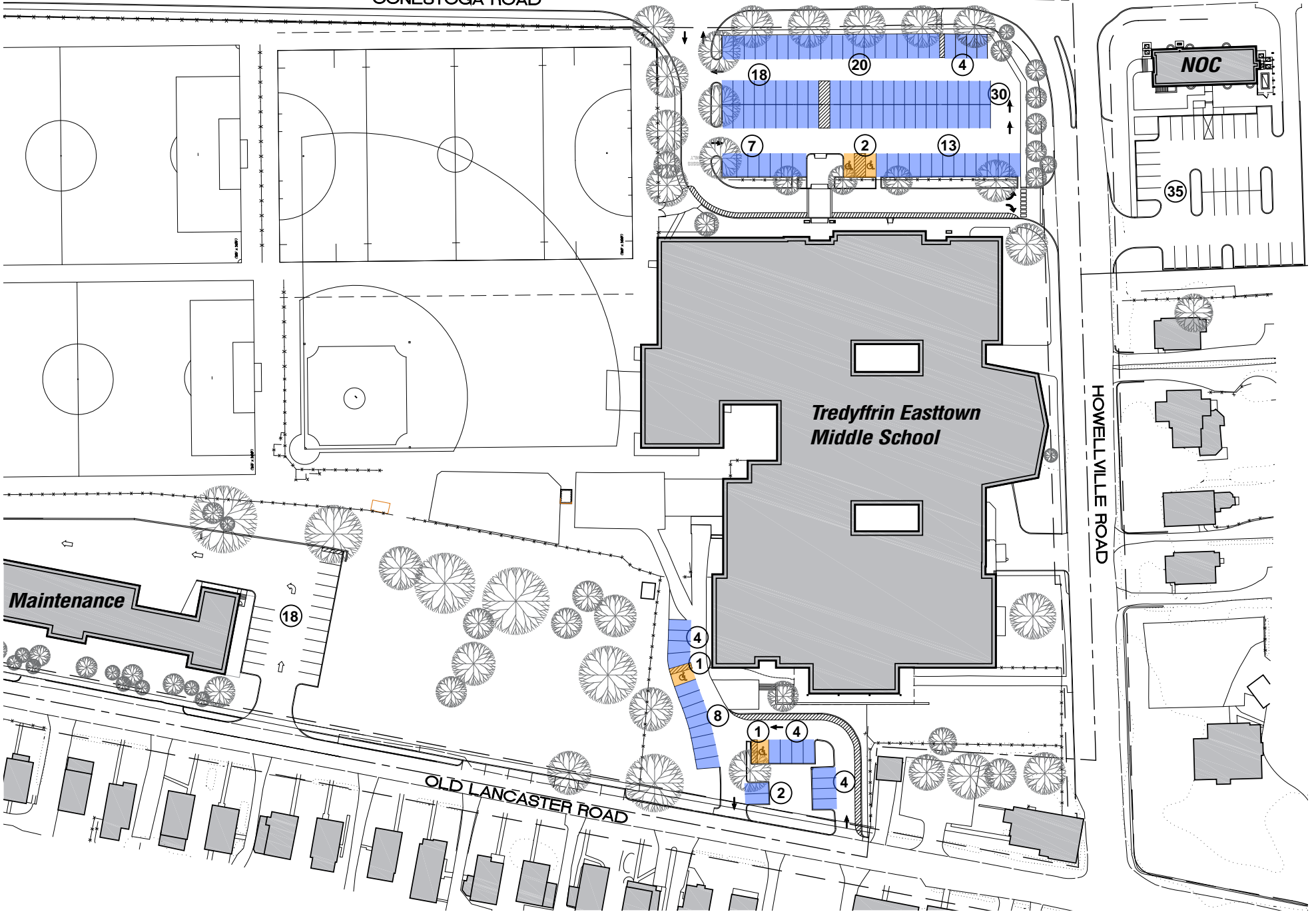
When conditions allow they park on the athletic fields for limited events

Park on surrounding streets, at the NOC, Conestoga HS and the Timothy School



DALEY+JALBOOT
 Architects LLP

CONESTOGA ROAD



*Tredyffrin Easttown
Middle School*

HOWELLVILLE ROAD

NOC

35

Maintenance

18

OLD LANCASTER ROAD

Parking Study Update 2017
Tredyffrin Easttown Middle School - Proposed Additional Parking

The proposed additional parking lot shown is the same as that shown in the 2008 parking study. The advantages to this lot are that it allows for a longer queuing lane for parent drop-off and pick-up (shown hatched in the plan). The plan also modified the entrance and exit along Old Lancaster Road, which will also reduce congestion. The stormwater management system for this new impervious area is located under the parking lot.

The five required handicap parking spaces have all been located at the 'front door' of the school in the upper lot.

Cost Estimate:

General Construction

Demolition & Earthwork	\$147,960
Site Development	\$426,150
Stormwater Management	\$262,850
Electric Construction	\$75,000
Paving Demolition and Patching	\$10,000

Subtotal	\$921,960
General Conditions / O.H. & P. (14%)	\$129,070
Bond / Insurance (2%)	\$21,000
Contingency (10%)	\$105,000

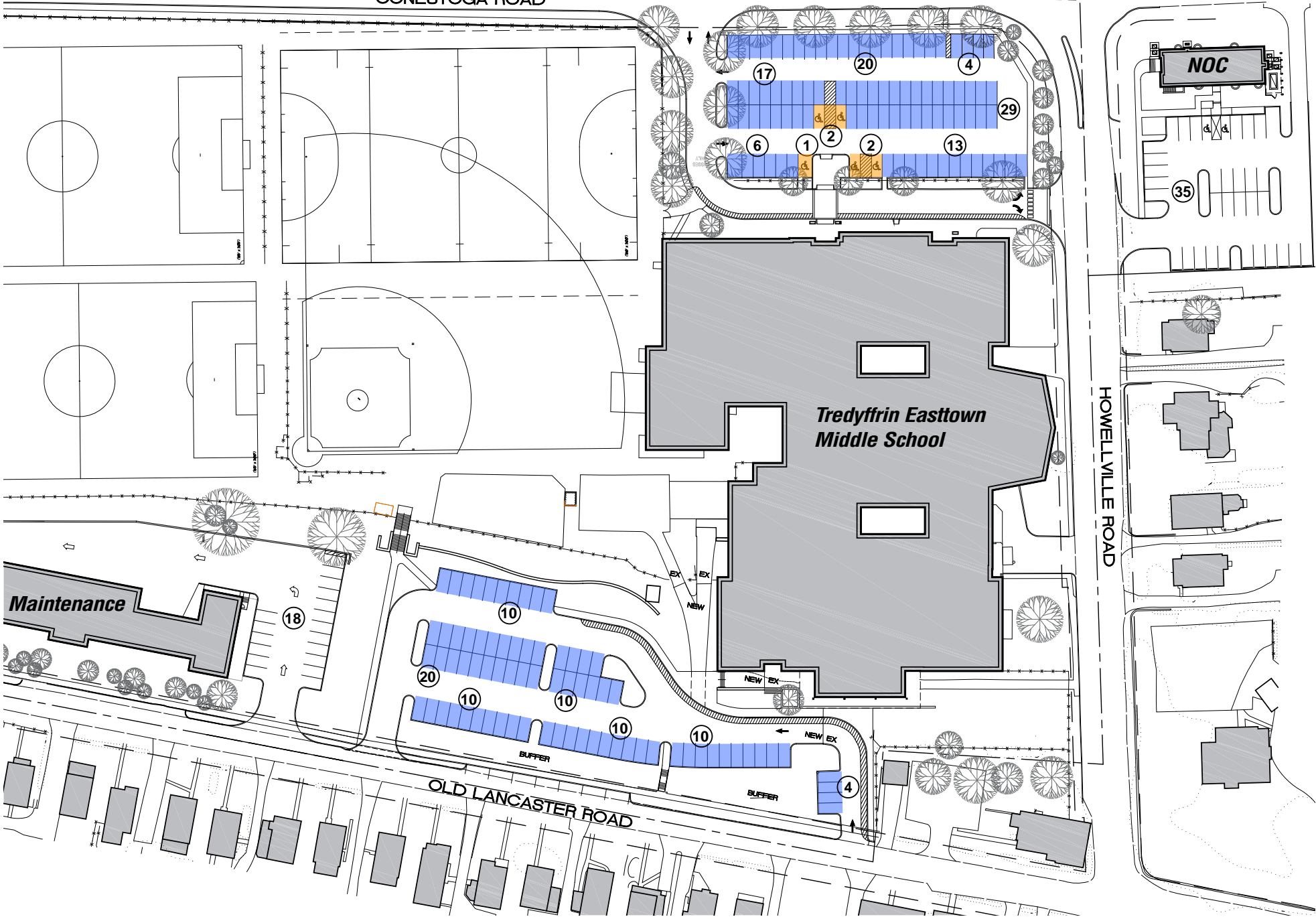
2008 Total	\$1,177,030
Factor for 2017 Dollars (20%)	\$235,406

2017 Total Construction Cost **\$1,412,436**



DALEY+JALBOOT
Architects LLP

CONESTOGA ROAD



*Tredyffrin Easttown
Middle School*

NOC

35

18

10

20

10

10

10

10

4

4

HOWELLVILLE ROAD

OLD LANCASTER ROAD

BUFFER

BUFFER

EX

EX

NEW

NEW EX

NEW EX

Maintenance

Daily Needs	Full Time	Part Time	Total	Comments
Teachers & Aides	111	0	111	
Itinerant Teachers & Staff	7	1	8	
Administration	3		3	
Support Staff / Sect.	4		4	
Visitors & Volunteers			25	
Service / Nurses		2	1	
Custodial Staff	7	1	8	
Cafeteria Staff	3	5	8	
Total			168	

Special Events

Many more than can be accommodated

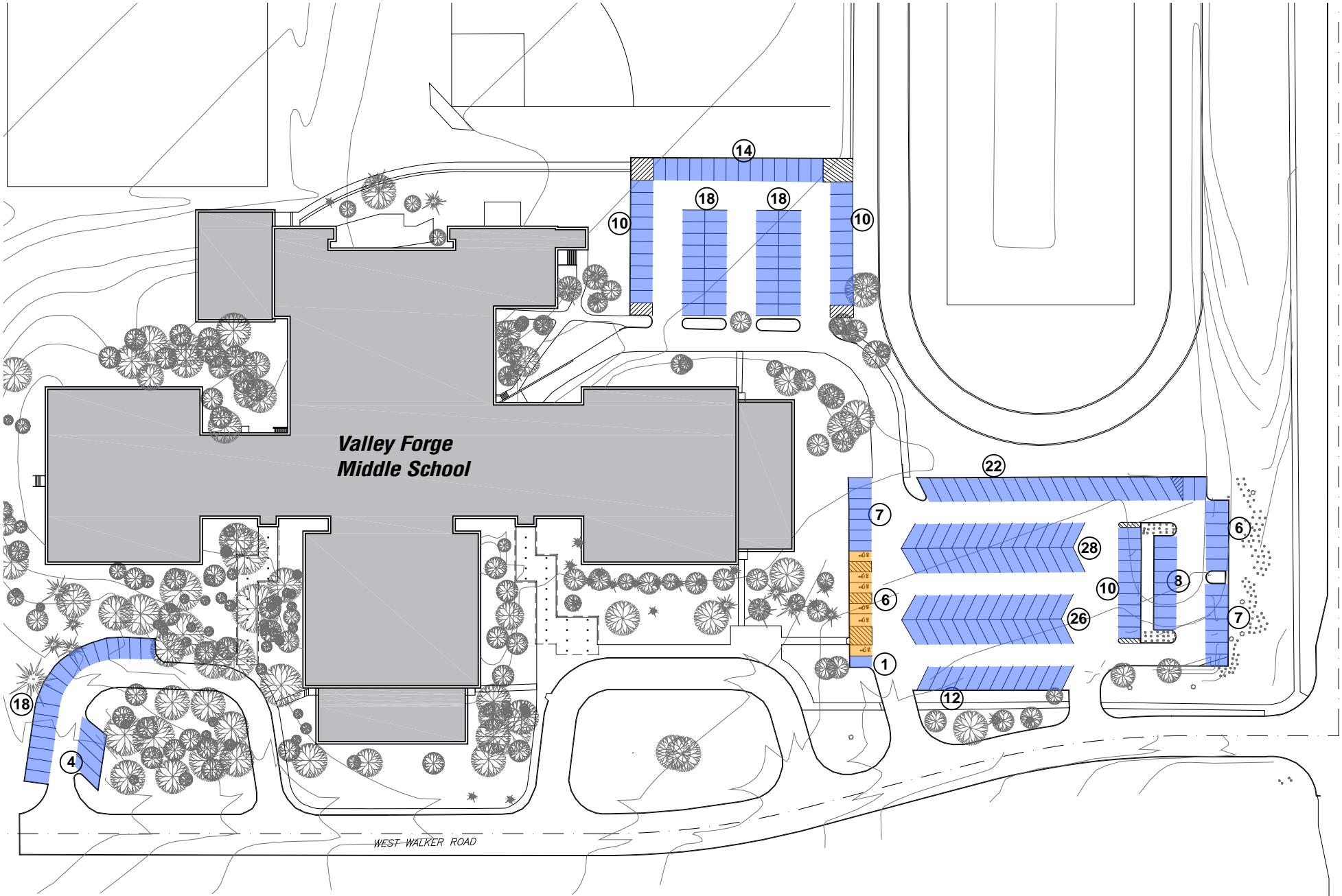
Current Solutions

Park on streets surrounding school

Agreement with Church to use their parking lot

Additional parking at VFES





Parking Study Update 2017
Conestoga High School - Parking Needs

Daily Needs	Full Time	Part Time	Total	Comments
Teachers & Aides	163	3	166	
Itinerant Teachers & Staff				
Administration	6		6	
Support Staff / Sect.	14		14	
Visitors & Volunteers		12	12	
Service		5	5	
Custodial Staff	17		17	
Cafeteria Staff	12		12	
Students	300		300	
Paraprofessionals	32		32	
Tech Support	3		3	
Trainers	2		2	
IU Support		9	9	
Total			578	

Special Events

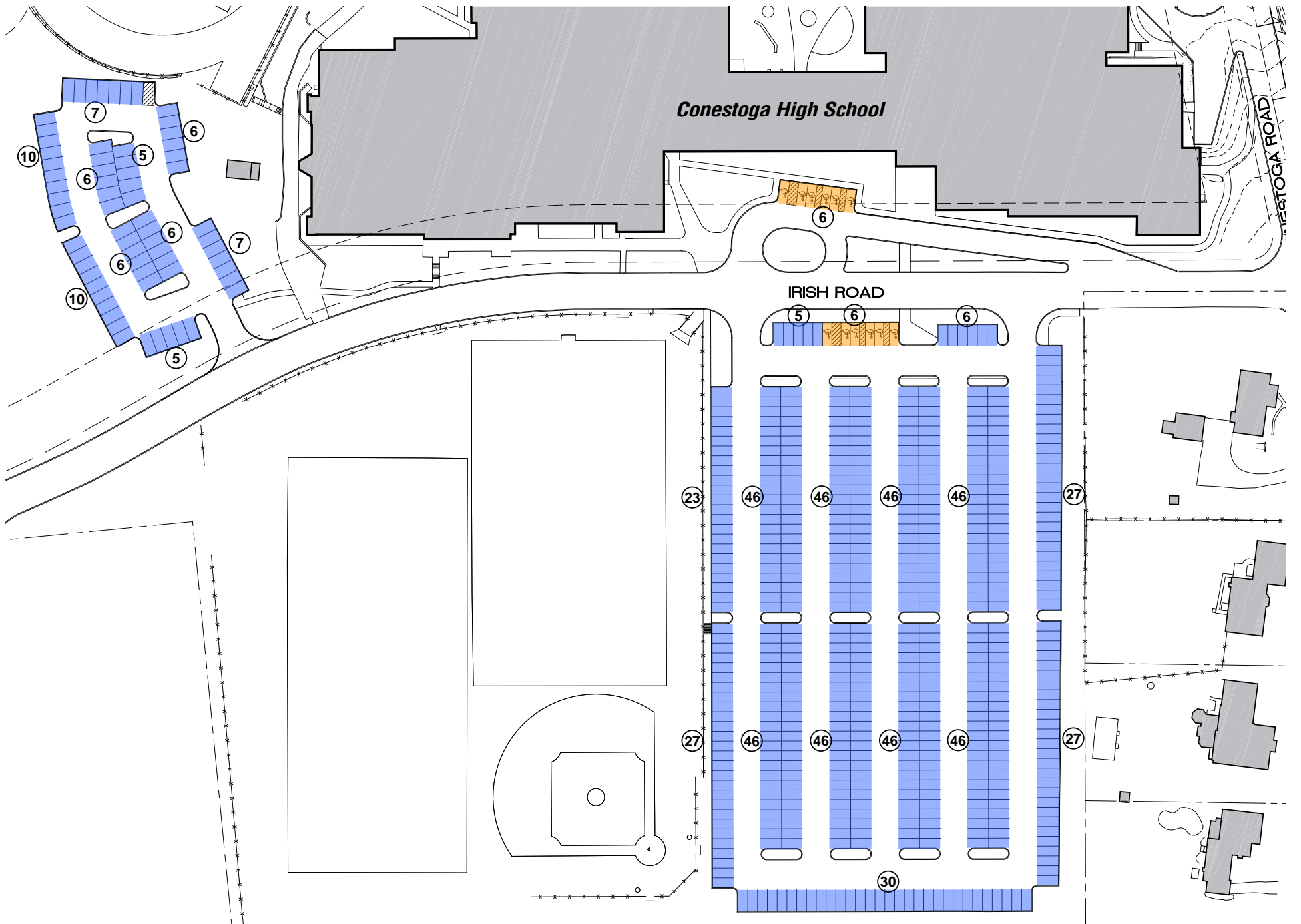
100-800

Current Solutions

Grass fields and streets



DALEY+JALBOOT
 Architects LLP



DALEY + JALBOOT ARCHITECTS

2314 Market Street, 4th Floor
Philadelphia, PA 19103

215.564.5222 tel
215.564.0898 fax
www.daleyjalboot.com



DALEY+JALBOOT
Architects LLP

Capital Sources & Uses (10 -Yr Plan)

	A	B	C	D	E	F	G	H	I
	2015-2016	2016-2017	2017-2018	2018-2019	2019-2020	2020-2021	2021-2022	2022-2023	Total Projected
	Projected	Projected	Projected	Projected	Projected	Projected	Projected	Projected	Projects
Sources									
1 General Fund Transfer to Capital Project	10,423,524	10,423,524	10,423,524	10,423,524	2,904,206	(3,883,240)	(11,049,780)	(15,879,189)	
2 Proceeds from Bond Issue	20,534,310	13,874,789	6,592,163	1,259,171	0	0	0	0	
3 Assigned Athletic Fund Balance	0	0	678,500	0	0	0	0	0	
4 Total Sources	30,957,834	24,298,313	17,694,187	11,682,695	2,904,206	(3,883,240)	(11,049,780)	(15,879,189)	
Uses									
5 Capital Improvement	859,669	429,497	1,709,478	698,980	714,452	1,863,214	238,660	1,621,756	8,135,706
6 Deferred Maintenance	2,224,125	3,392,968	2,653,167	5,967,430	3,886,508	3,075,730	3,739,396	2,896,926	27,836,250
7 Roofing	0	0	0	0	0	0	0	0	0
8 Regulatory/Safety	0	0	30,000	100,800	672,914	444,021	221,430	13,600	1,482,765
9 CCTV Security System	0	0	0	866,259	722,491	976,130	0	0	2,564,880
10 Vehicle Replacement	0	0	50,000	0	0	0	0	0	50,000
11 Teamer Field Turf	0	0	640,000	0	0	0	0	0	640,000
12 NEES Classroom Addition	1,617,864	0	0	0	0	0	0	0	1,617,864
13 Maintenance/Storage Building	1,231,224	2,590,073	0	0	0	0	0	0	3,821,297
14 Retrofit Lighting Projects	0	0	100,000	0	0	0	0	0	100,000
15 Prof Fees, District Costs, Contingencies	726,639	870,088	828,847	1,145,020	791,081	807,445	629,923	679,842	6,478,885
16 Total Uses	6,659,521	7,282,626	6,011,492	8,778,489	6,787,446	7,166,540	4,829,409	5,212,124	52,727,647
17 Balance of Sources over Uses	24,298,313	17,015,687	11,682,695	2,904,206	(3,883,240)	(11,049,780)	(15,879,189)	(21,091,313)	

Source: October 11 2016 Infrastructure Report